

Report of: Jane Maxwell, East North East Area Leader

Report to: Outer North East Community Committee – Alwoodley, Harewood and Wetherby Wards

Report author: Andrew Birkbeck, Acting Area Improvement Manager, Tel: 0113 3367642

Date: 20th March 2017

To Note

Community Committee Update Report

Purpose of report

1. This report provides an update on the on-going work programme of Outer North East Community Committee.

Main issues

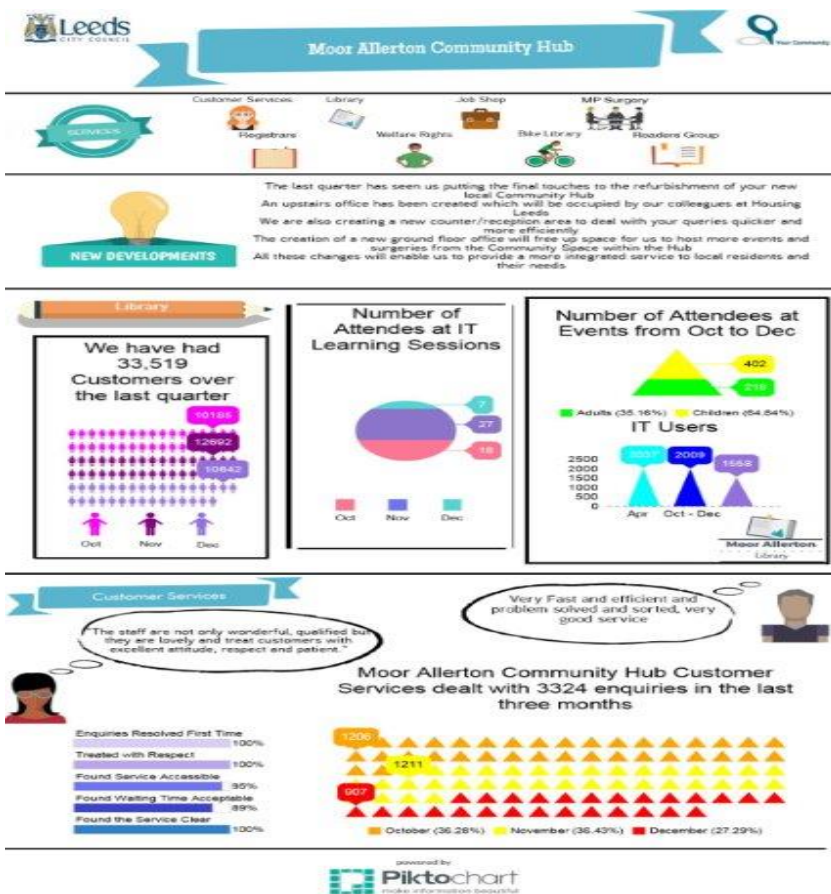
2. Tasking meetings for both Alwoodley and Harewood & Wetherby Wards have taken place in January, February and March. Tasking meetings are an opportunity for the Police, Ward Members, council officers and partner agencies to discuss and co-create actions to address emerging and on-going crime and environmental issues in the local area.
3. For all the latest information and developments regarding community safety matters in the Outer North East area please visit:
<https://www.facebook.com/WYPLeedsOuterNorthEast/?fref=ts>
4. The Outer North East Environment Sub Group is to meet again on 23rd March 2017. The sub group is chaired by Cllr Gerald Wilkinson, the Outer North East Community Champion for Environmental Services.
5. Ward Members, officers from the Communities Team, Housing Leeds, East North East Locality Team, Parks and Countryside and Waste Management Services will all be in attendance.

6. The minutes of the Outer North East Environment Sub Group meeting held on 24th November 2016 are attached at **Appendix A**. The minutes of the meeting on 23rd March 2017 will be presented to the next available committee.
7. A series of Ward Member meetings have been held for Alwoodley, Harewood and Wetherby since the last meeting of the Community Committee.
8. Alwoodley Ward Members have met on 20th December 2016, 24th January, 9th February, 7th March and 8th March. Local issues discussed included Housing Leeds' repair service for Alwoodley tenants, greenspaces, highways maintenance and improvements, the environment and Wellbeing finance.
9. A Harewood Ward Members meeting was held on 24th January 2017. As well as Wellbeing finance, subjects for discussion included progress with Linton Bridge, Housing Leeds assets in the Harewood Ward and developments at Whinmoor nursery.
10. Wetherby Ward Members met on 22nd February 2017. Items discussed included a wide range of highways matters, environmental issues and Wellbeing finance.
11. An Emmerdale Stakeholder Panel meeting was held on 11th January 2017. This panel considered 13 projects that had been put forward by eligible groups and organisations since the meeting on 5th October 2016.
12. The purpose of the panel is to help steer and allocate the S106 funding stream that has arisen to help mitigate any impact that the Emmerdale film set may have. The Chair, Cllr Rachel Procter, has resolved to utilise this funding stream to its full potential over the coming years to best benefit not only the Harewood estate and its environs, but also the wider Harewood Ward.
13. The Alwoodley Family of Schools drama project, supported and funded by Ward Members, continues to provide exciting opportunities for local children to experience first-hand all aspects of the production process including filming & photography, storytelling & script writing as well as a back stage tour of the City Varieties Theatre.



Caption: Alwoodley pupils enjoying a session at the City Varieties Theatre

14. Information on Linton Bridge, which has been closed since 27th December 2015 is regularly updated via the following link: <http://www.leeds.gov.uk/residents/Pages/Linton-Bridge.aspx> . It is expected that the bridge will be full re-open in Summer 2017.
15. The Moor Allerton Community Hub revamp is coming to a conclusion in the coming weeks. The Hub offices are now finished and staff from Housing Leeds will complete their move to the Community Hub imminently. The Hub is also now DDA compliant for the first time and there is a passenger lift installed on site.
16. In the first of many exciting developments to come, the Moor Allerton Hub will welcome the Money Buddy service (funded by the Outer North East Housing Advisory Panel), which will take place every Tuesday 12.45 -3.30pm.



Caption: The latest infographic for the Moor Allerton Hub (October-December 2016)

17. Since the last meeting in December, members of the Communities Team (ENE) have been managing and populating the Facebook page that has been established for the Outer North East Community Committee as a means for communicating with partners, 3rd sector organisations and local residents.
18. At the time of writing the Outer North East Facebook page has 137 Likes. Since the December Community Committee, the Communities Team have posted over 50 items that have had a reach of over 4,136 (although it should be noted that this will include a high proportion of re-visits to site from the same people).
19. An example of the potential of social media as a means for community engagement is highlighted overleaf.

Caption: This post from 13th February relating to Linton Bridge had a reach of 855 people.

Conclusion

20. There are a number of actions on-going to achieve the Community Committee priorities and fulfil its work programme but despite this, the Community Committee recognises that there is still a significant amount of work to be done.

Recommendations

21. That Members note the contents of the report and make comment where appropriate.
22. That Members approve the attached newsletter (**Appendix B**) for distribution amongst key stakeholders.

Background information

- Link to the Facebook Page for the Inner East Community Committee: <https://www.facebook.com/LCCOuterNE>
- Link to the Your Community Twitter Page: https://twitter.com/@_YourCommunity